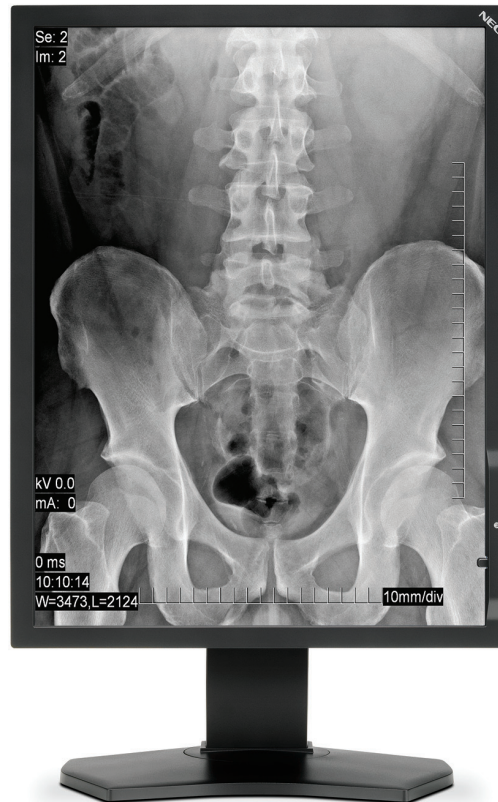


NEC MD211G3



NEC MD Series Digital Grayscale Display Systems

Display Systems for Primary Diagnostics of Medical Images

The NEC MD211G3 (L211UV) is designed for viewing of grayscale digital images for diagnosis by trained physicians. Applications include diagnostics image reporting in radiography as well as CT, MRI and other medical imaging modalities. To guarantee the display performance as specified, a MD211G3 display must only be used in conjunction with NEC approved display controller boards and drivers.

Key Features:

- 21.3" 3MP (2048x1536 resolution) with best-in-class SA-SFT technology for most stable viewing performance
- Unique re-calibratable Front Sensor System for latest QA conformance capability
- Individual factory calibrated DICOM curve with unique in-built "Quick Screen QA" check
- Precise DICOM GSDF calibration using internal 15.5-bit look-up table
- DisplayPort connectivity

HEALTHCARE

NEC Display Solutions

